

SEMI-PRO DIGITAL TIRE PRESSURE GAUGE

INSTRUCTIONS



GETTING STARTED

Push ON to turn gauge on. Gauge shuts off automatically after 30 seconds of no use (no pressure). Gauge auto-zeros at turn-on. If zeroing is ever needed, push ON and hold for 5 seconds. Back light is on whenever gauge is on.

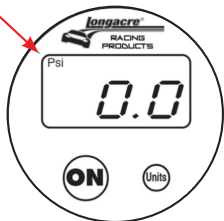
Change batteries when the battery icon shows in the upper right corner of the display. Replace with 2 quality "AAA" batteries. Access is on the back. Install with correct polarity.

WARNING

DO NOT DROP THE UNIT. KEEP IT CLEAN AND DRY. DO NOT EXPOSE TO STRONG ELECTROMAGNETIC FIELDS (caster/camber gauge magnets).

DO NOT EXCEED RATED PRESSURE. When the Low Battery indicator appears in the upper right of the display, replace with 2 quality "AAA" batteries. Access is on the back of the gauge.

UNITS CHOICE:
PSI here



Bar here



UNITS
Button

Low Battery
indicator



CONVERT TO METRIC, BAR, OR OTHER.

- Turn gauge on. When 0.0 appears push **AND HOLD** the UNITS button on the right side.
- After 3 seconds, the units indication will start to flash. This is along the top of the display. PSI will be on the upper left.
- Release the UNITS button and then push again to change. Options are PSI, BAR, Kgm/cm2, and kPa.
- Once you have reached your selection, stop pushing the button. The gauge will return to normal function in 5 seconds.